

PHILIPPINE

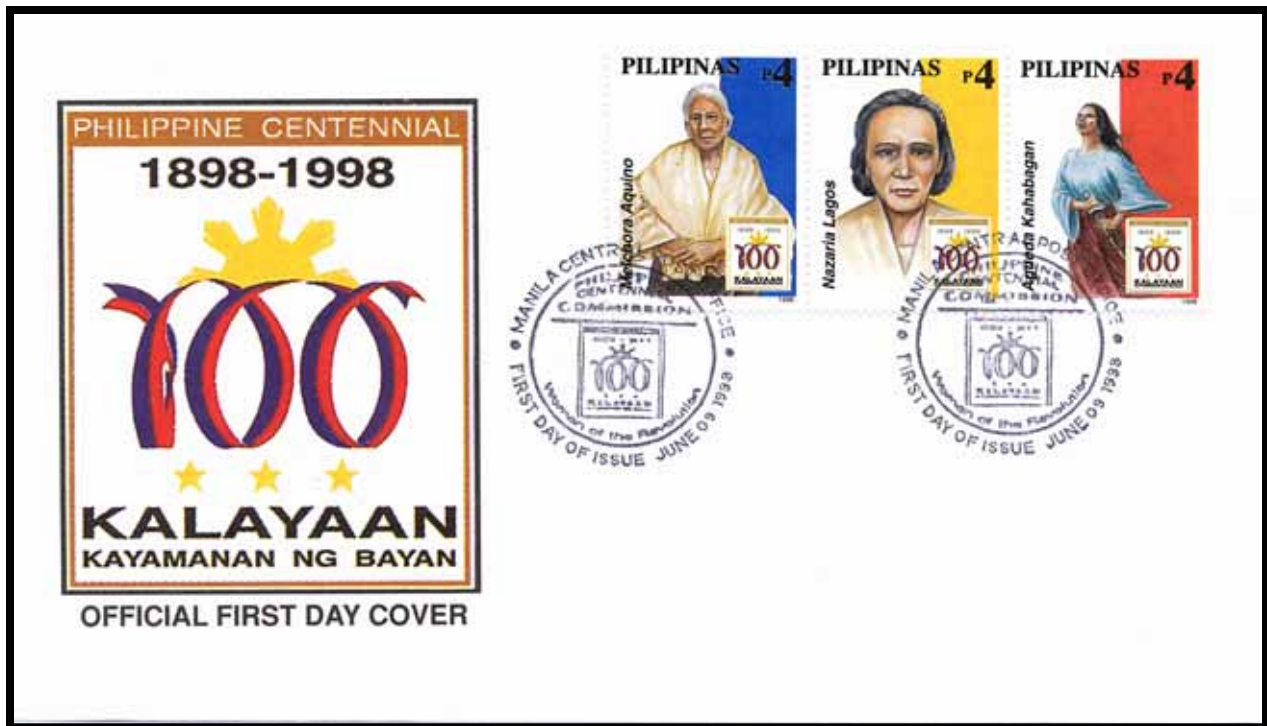


ISLANDS

First Day Covers Republic Era



Manila, July 4, 1946 Inauguration Day of the Republic of the Philippines



Manila, June 9, 1998 – Women of the Revolution using a PHILPOST envelope. The cachet is the official logo of the Philippine Centennial Year of Freedom June 12, 1898 (also part of stamp designs).



Republic Era Commemorative Varieties



In 1984, the Philippines issued four stamps honoring ESPANA 84, World Stamp Exhibition. The printings include an uncut souvenir sheet plus separate perforated stamps. The 1st and 2nd printings offer collectors an array of varieties and errors, a few are shown below.

1st
P
R
I
N
T
I
N
G



Overprint Error – **LADY** (top) versus correct **HOLY** (bottom) on LR stamp

Uncut – Red Overprint

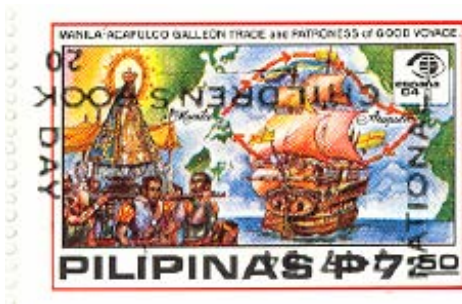
2nd
P
R
I
N
T
I
N
G



Filled Zero in 300 on LR stamp identifies 2nd printing

(1st printing shown on top)

Uncut – Black Overprint error



Inverted Black Overprint error



Double Red Overprint error with one Inverted

PHILIPPINE



ISLANDS

Infamous 1932 Design Error



Mislabeled Pagsanjan Falls error showing Vernal Falls, Yosemite Valley, California



Mislabeled BEP photo of Vernal Falls, person making mistake has never been identified

Action	Quantity
Initial Printing (May 3, 1932)	1,013,400
Overprinted	30,000
Available	983,400
Destroyed (Jan 5, 1933)	906,725
Issued	76,675

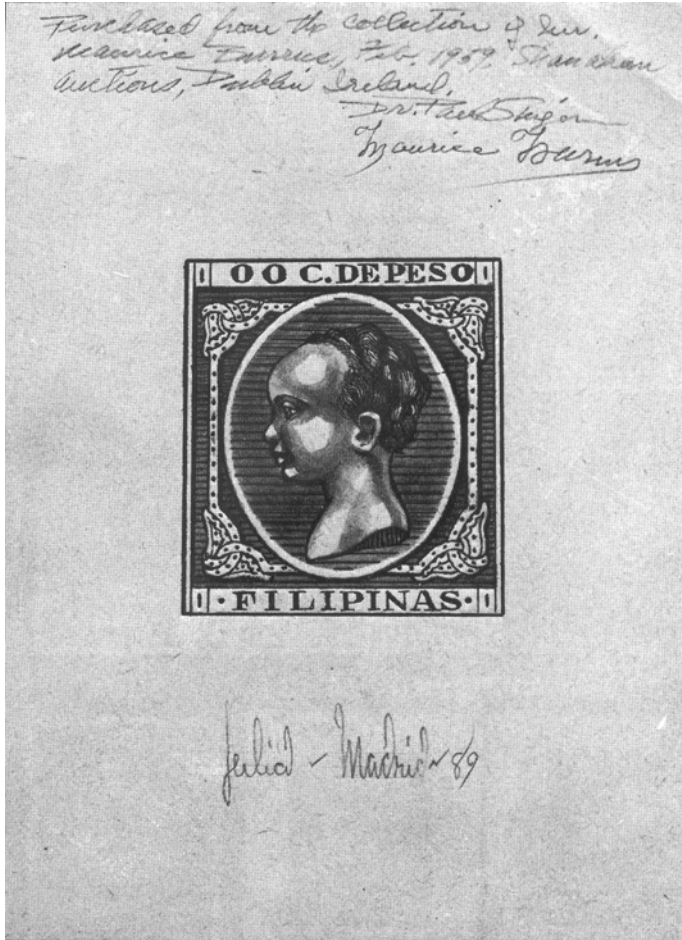


Action	Quantity
Overprinted (Sept 27, 1932)	30,000
Destroyed (Jan 5, 1933)	4,696
Issued	25,304

It took 40 years before this February 16, 1971 stamp was issued rectifying the error.



Essays AND Proofs All Eras



Spanish Era *Baby Heads*. King Alfonso XIII was born a king on May 17, 1886. The 1889 essay (left) is signed by collector Maurice Burrus (top) and designer Eugenio **Julio** Jover (bottom). The two 1890 imperforate proofs above show the final accepted series design.



Commonwealth Era. November 15, 1939 imperforate proof celebrating 4th anniversary of the Commonwealth.



Japanese Occupation Era. 1942 imperforate proof, 1st semi-postal issue used for 16¢ registry fee and Philippine Red Cross (2¢).