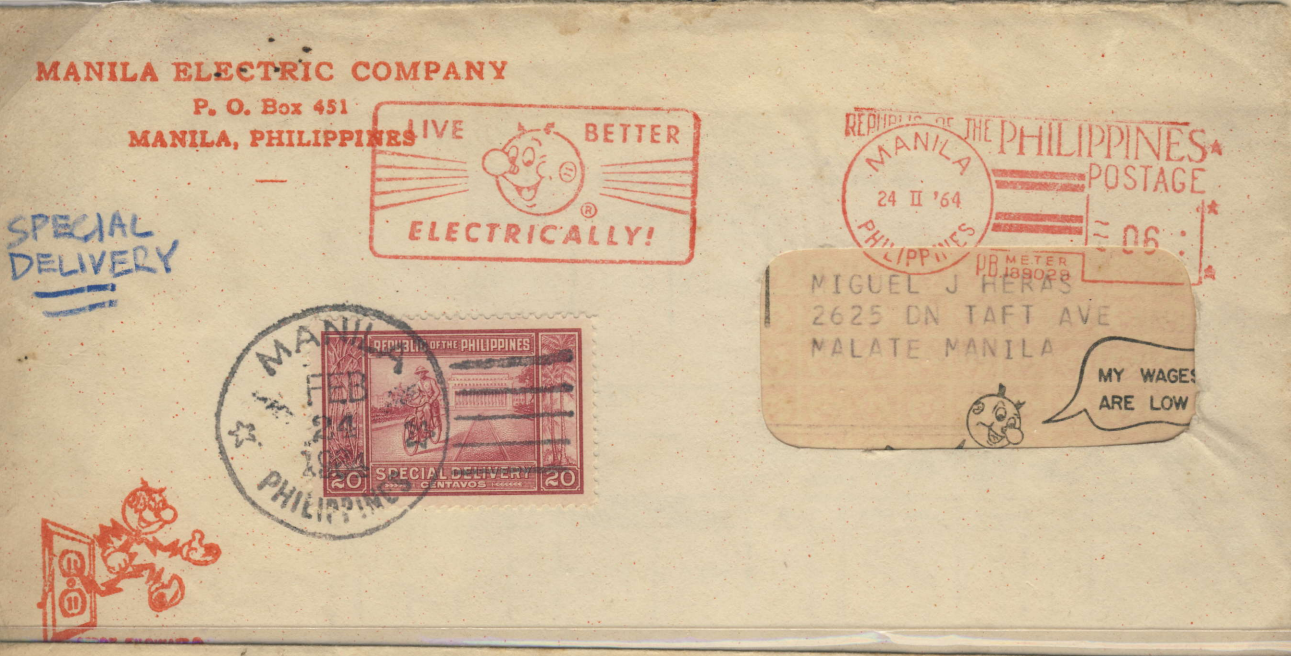
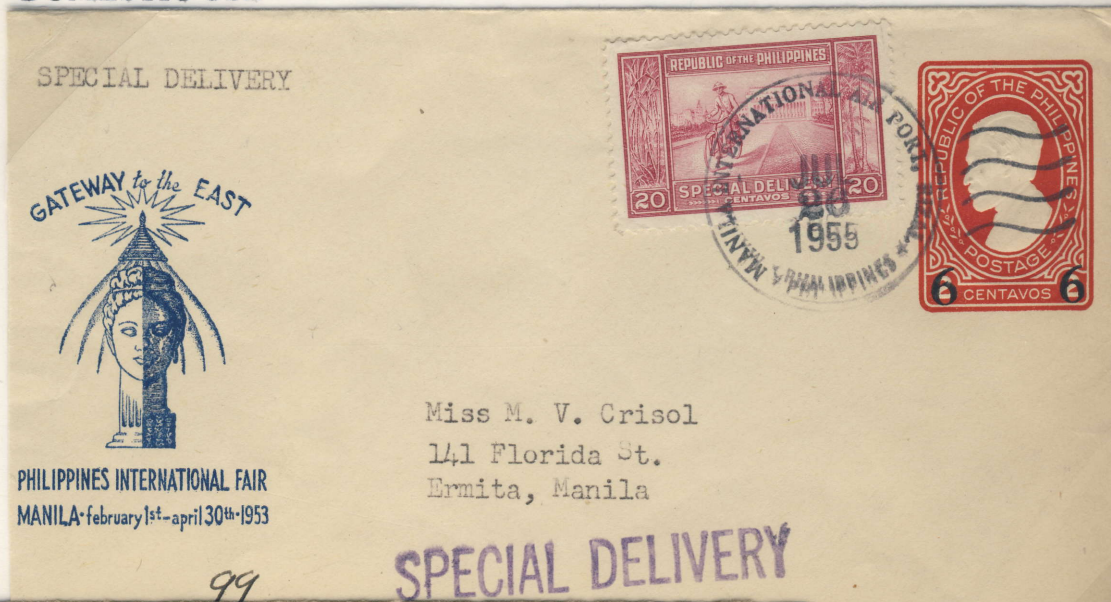
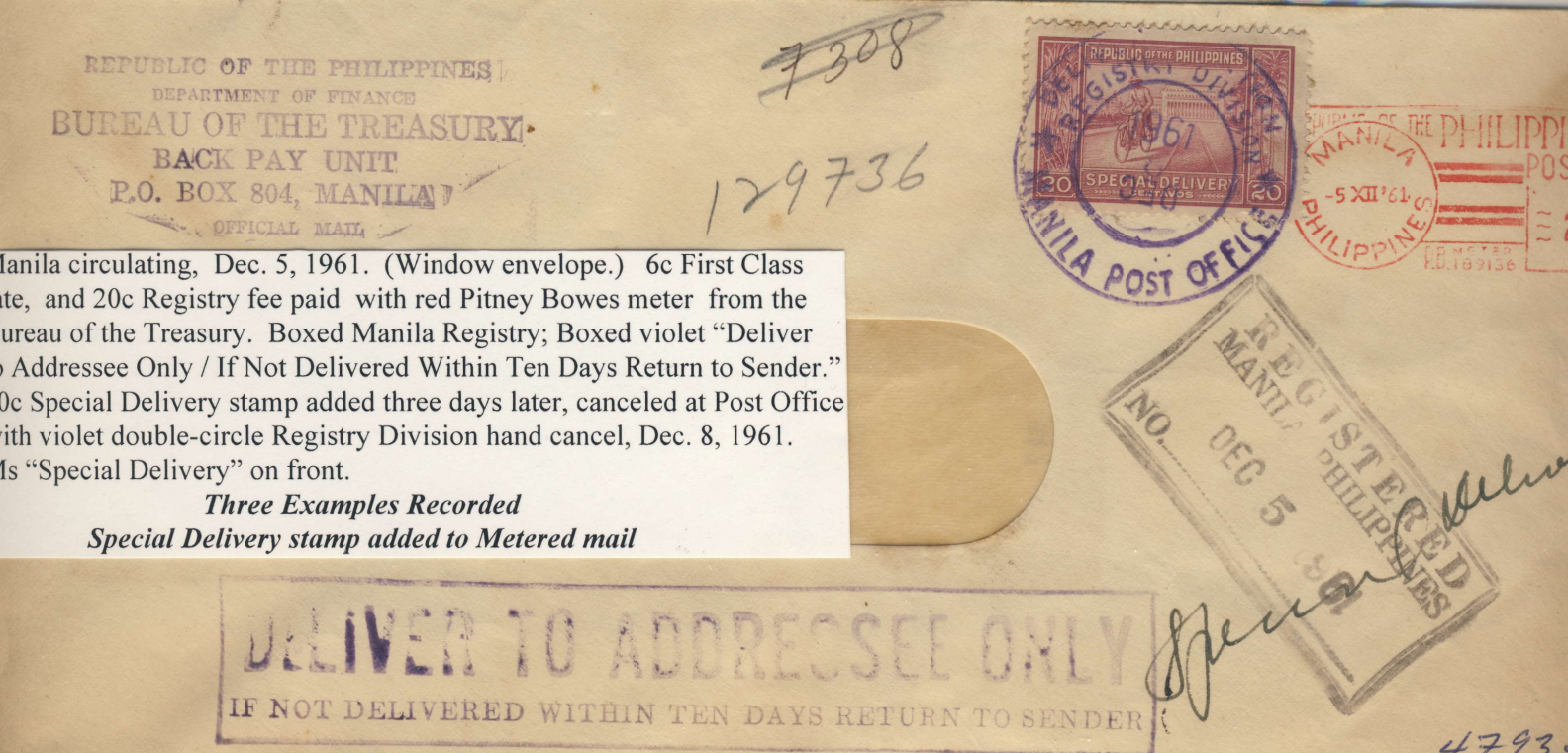


SPECIAL DELIVERY SERVICE - DOMESTIC USE

Manila International Airport to Ermita, Manila, July 26, 1955.
(6c surcharge on 1948 postal stationery, issued Feb. 1, 1953.)
6c domestic First Class rate, effective Jan. 11, 1959 to Sep. 16, 1967. 20c Special Delivery stamp. Violet straight-line "Special Delivery"



Manila circulating, Feb. 24, 1964.
6c First Class rate, paid with red Pitney Bowes slogan meter from the Manila Electric Co. 20c Special Delivery stamp canceled at Post Office, same day. Blue ms. "Special Delivery"



Manila circulating, Dec. 5, 1961. (Window envelope.) 6c First Class rate, and 20c Registry fee paid with red Pitney Bowes meter from the Bureau of the Treasury. Boxed Manila Registry; Boxed violet "Deliver to Addressee Only / If Not Delivered Within Ten Days Return to Sender." 20c Special Delivery stamp added three days later, canceled at Post Office with violet double-circle Registry Division hand cancel, Dec. 8, 1961. Ms "Special Delivery" on front.

Three Examples Recorded
Special Delivery stamp added to Metered mail