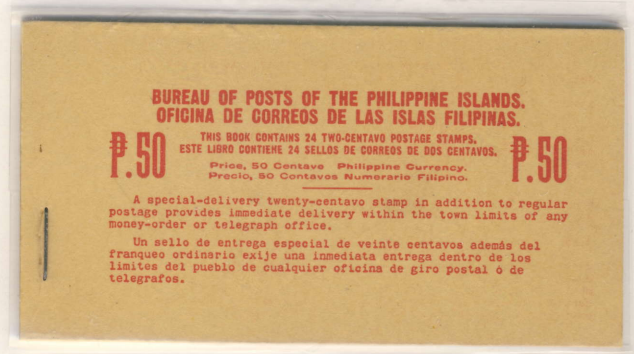


**LARGE COMMONWEALTH  
BOOKLET PANE STAMPS**

First Day of Issue: January 15, 1937 - Number Printed: 239,520



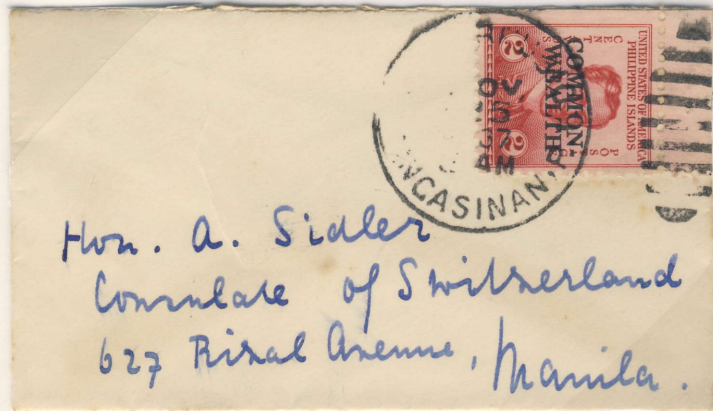
**Unexploded Booklet of Four Panes**  
*Only Example Recorded with Single Staple*

Both rose Rizal booklet panes were printed with a 360 subject flat press printing plate. While the BEP originally intended to issue the panes unoverprinted, by 1936 all stamps in the series were being overprinted with the large "Commonwealth." Thus, no rose Rizal booklet stamps are found without the overprint. The plate numbers were entered in the vertical selvedge, adjacent to the stamps at positions 1, 20, 341 and 360. The side selvedges were trimmed off when the sheet was cut into panes, so none exist with plate numbers. Arrows and guidelines were not entered onto the original plate, but were added prior to making the small "Commonwealth" panes. Line position panes can be found on those panes in positions B, C, H, I, J, K and L.



**Large Die Trial Color Proof in Lake**  
**Die Sunk on Card (1934)**  
*Three Examples Recorded*

Pozorrubio, Pangasinan to Manila, Nov. 25, 1937  
Booklet single = 2c Internal First Class Rate, 1-20g



From **Chee Yang Lim**  
**LIM ENG CHIU**  
P. O. BOX 2130  
NO. 479 JUAN LUNA  
MANILA, P. I.

Manila to United States  
Jan. 10, 1937. Three  
booklet stamps = 6c First  
Class Rate, 1 oz. or less

**Posted Five Days Before**  
**First Day of Release**

*Only Example Recorded*  
*of Pre-First Day Use*

**CLEVELAND MODEL & SUPPLY COMPANY**  
4506-12 LORAIN AVENUE  
CLEVELAND, OHIO  
U. S. A.

