

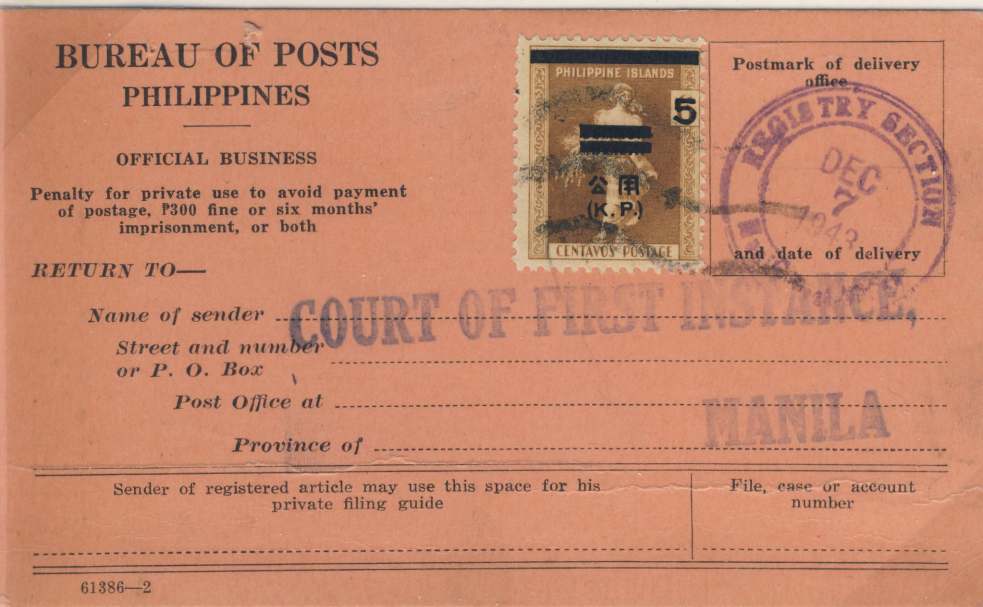


**Doubled Surcharge**  
(P.F. Cert.)  
**Ten Examples Recorded**



**Severely Misplaced Surcharge**  
(Printer's waste, looted from the vault in the Manila Central Post Office during the battle for the liberation of the city.)  
**Six Examples Recorded**

All Official Stamps during the Occupation were printed with the Japanese characters, "KoYo" and the abbreviation, "K.P." which is Tagalog for "Kagamitang Pampamahalaan" which means "Official Business."



Local use, Dec. 7, 1943  
5c. First Class, 1-20g

Tacloban, Leyte to Ormoc, Leyte  
January 19, 1944. 15c. First Class  
Rate, 41-60g  
**Double Surcharge - Right Stamp**

**Only Recorded Example on Cover**

