

1935 OFFICIAL ISSUE - 6c. BROWN



129927

"B" Omitted
Only Example
Recorded



"O" Omitted
Only Example
Recorded



Doubled Overprint
Only Example
Recorded



O.B. Overprint Shifted Left



Omitted Period after "O"
Two Examples Recorded



Omitted Period after "B"

Number Printed: 776,896
First Day of Issue: March 14, 1935



Manila to Iloilo, Iloilo, Dec. 29, 1936. 4c. Internal Rate, 21-40g, 16. Internal Registry

1935 OFFICIAL ISSUE - 8c. VIOLET

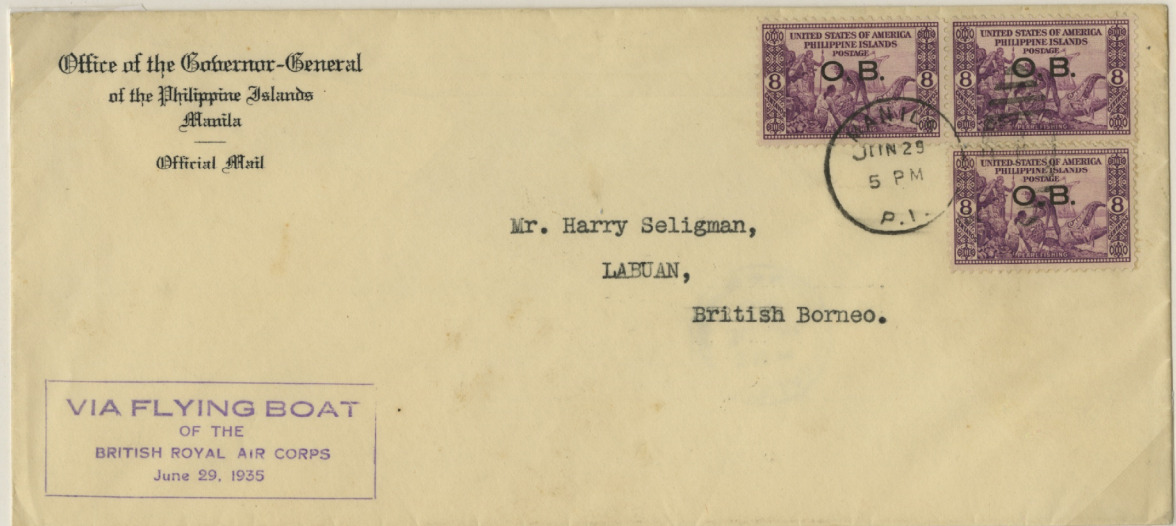
Number Printed: 646,200



Only Plate Number used



Red-Violet Shade



Manila to Labuan, British Borneo, Jun 29, 1935
Rec. Labuan, Jun. 30. 24c. Foreign First Class, 21-40g