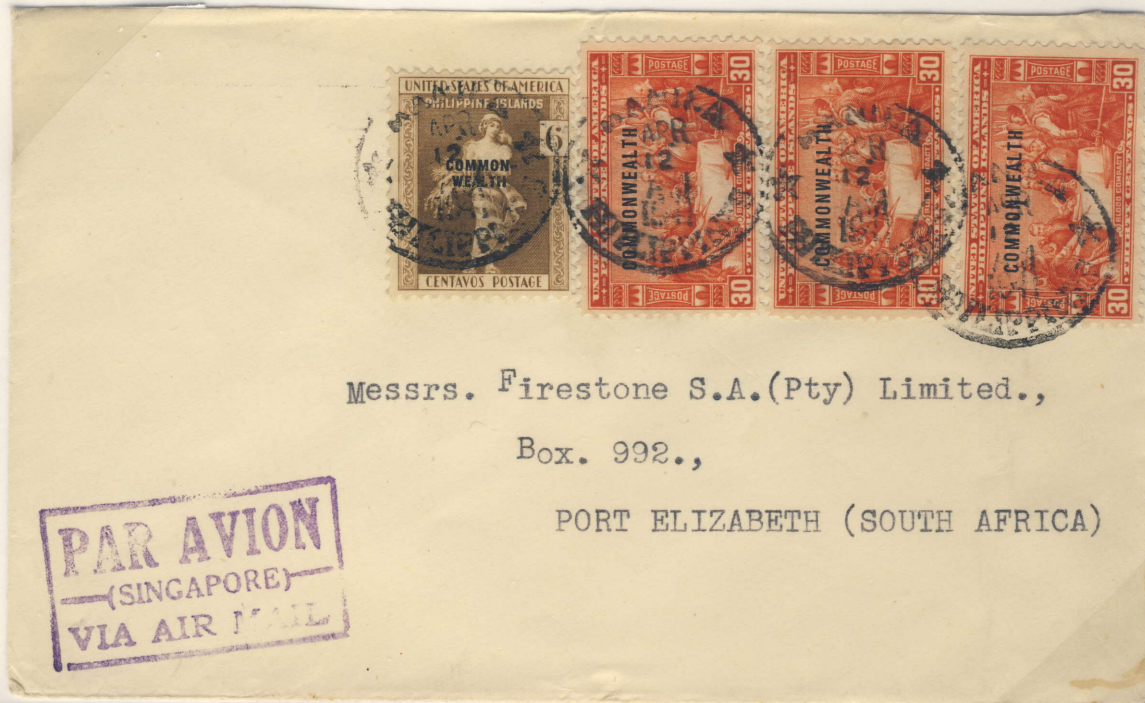




Two Plate Numbers used to print the 30c. Small Commonwealth stamps



Top Margin Plate Number Strip of Three with Arrow and Guideline at left which identifies these stamps as coming from the top right pane of 50 stamps



Manila to Port Elizabeth, South Africa, via Singapore, Apr. 12, 1941. 12c. First Class Foreign Destination Rate, 1-20g; 42c/5g Airmail Rate.

Messrs. Firestone S.A. (Pty) Limited.,
Box. 992.,
PORT ELIZABETH (SOUTH AFRICA)



Manila to Devon, England. 12c. First Class, 1-20g; P1.60 "Two Ocean" Airmail to Europe via US, each 15g

Only Example Recorded of Two Line "Received at Manila by Steamer" Routing mark