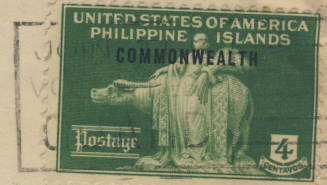
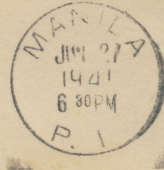


SMALL COMMONWEALTH
4c. GREEN

PHILIPPINE EDUCATION COMPANY

MANUFACTURING STATIONERS — BOOKSELLERS — PUBLISHERS
NEWS DEALERS — PRINTERS — ENGRAVERS — PAPER DEALERS
OFFICE, SCHOOL AND ART SUPPLIES — RUBBER STAMPS — BRASS SIGNS

101-103 ESCOLTA MANILA, P. I. P. O. BOX 620



Manila to U.S.
June 27, 1941
4c. Third Class Rate

Mr. Walter H. Kirch
Clearview Road
Glenshaw, Pa.

This parcel may be opened for Postal
inspection by the Director of Posts, or his
authorized agents.

CONTROLLE POSTAL MILI

H. H. Chatterson
111 Central Ave.,
Milwaukee, Wis.



Mr. Leonard H. Chatterson
Flat par EBOLWA
Cameroun, West Africa.



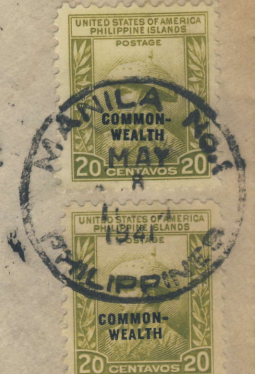
Manila to Cameroun,
West Africa, May 16, 1941
12c. Foreign First Class



Miss. L. Lowe.

12. Bar Kochba Street

Jerusalem.



Manila to Jerusalem, Palestine
May 8, 1941. 12c. First Class
Rate to Foreign Destination, 20g
or less. Airmail Rate of 24c./5g

Largest Recorded Use