

LARGE COMMONWEALTH - 2 Peso BROWN & BLACK

Number Printed: 30,000
 First Day of Issue: Mar. 29, 1937

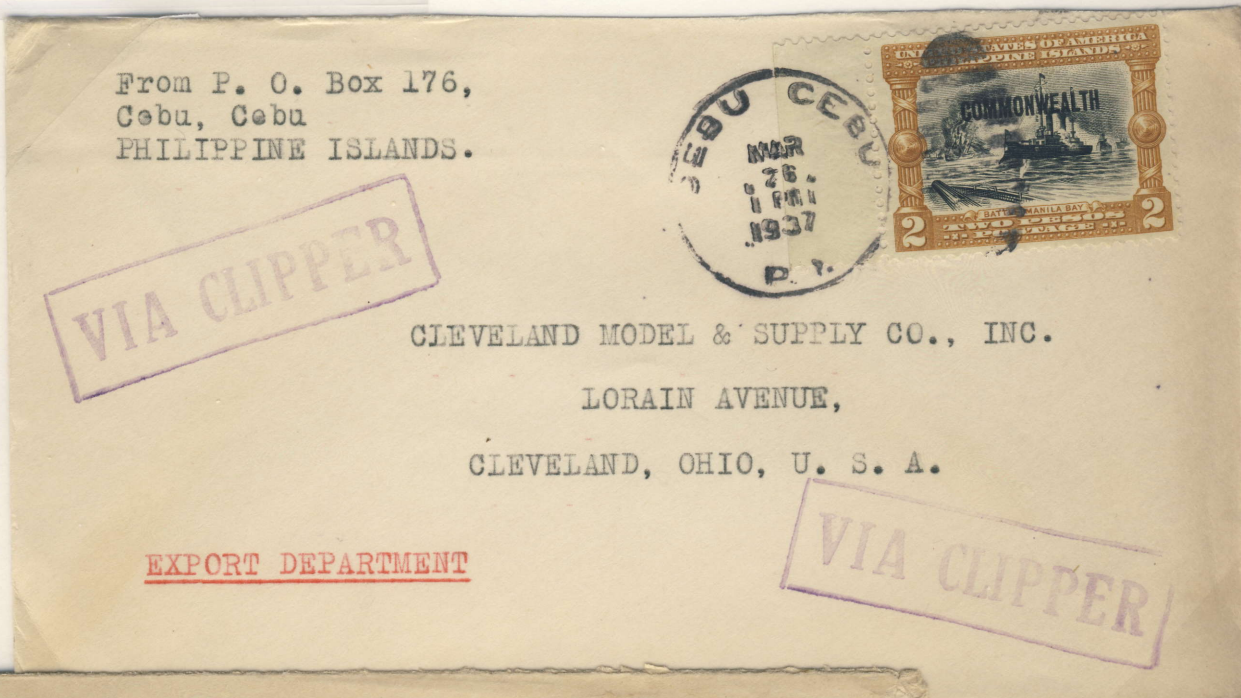


Two Plates were used in printing the 2
 Peso Large Commonwealth stamps
 Plate 130338 printed the brown frame
 Plate 130337 printed the black center

Cebu, Cebu to U.S.
 Mar. 26, 1937. P2.00
 Clipper Rate 15-30g

Used Three Days Prior
 to First Day of Issue

Only Example Recorded



The Bachrach Motor Company, Inc.

P. O. BOX 420, MANILA
 PHILIPPINES



THE PERFECT CIRCLE COMPANY
 HAGERSTOWN,
 INDIANA, U. S. A.

Manila to U.S., 1939
 P2.00 Clipper
 Rate 15-30g

(Phony Inverted
 Central Vignette
 and Overprint.)

