

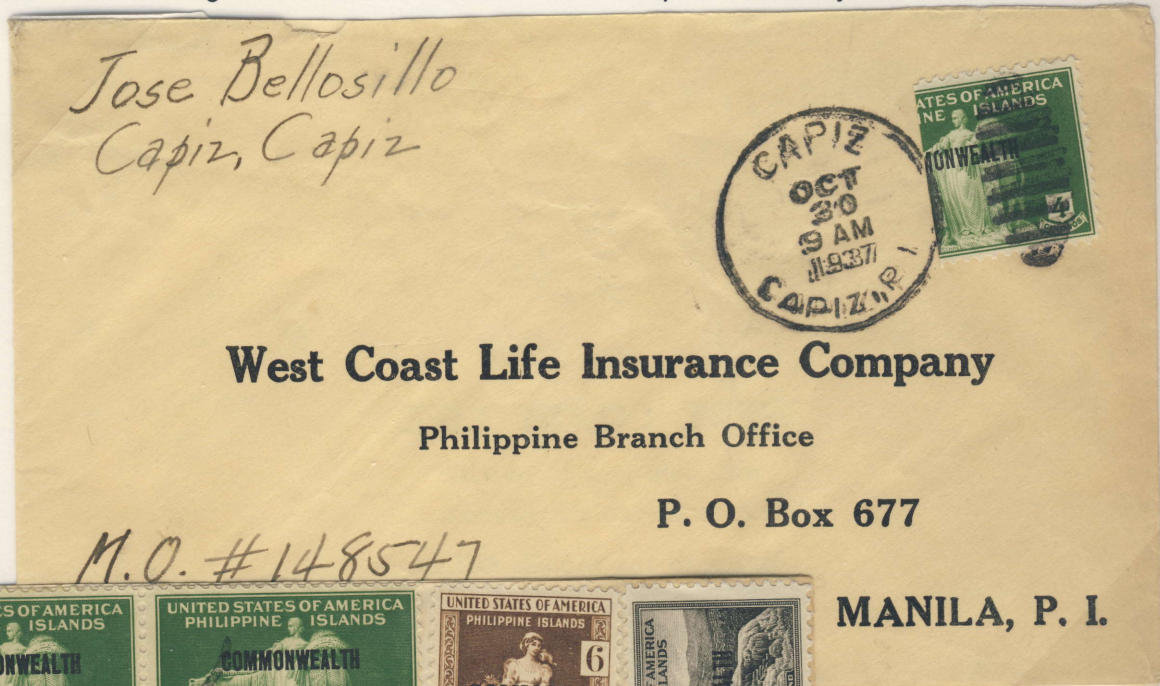
LARGE COMMONWEALTH - 4c. GREEN

Number Printed: 80,000
First Day of Issue: March 29, 1937



Incomplete Overprints - Most Likely From Set-up
Sheets to Gauge Ink Pressure or Proper Inking

There are less than 40 covers recorded with the 4c. Large Commonwealth stamp. Even as a used stamp off-cover, there are fewer than 50 examples recorded. The 4c. stamp paid only two lesser utilized postal rates: 3rd class mail to the United States and Possessions, and the printed matter rate to foreign destinations. Otherwise, it was mostly used as a makeup stamp. With over 15 million of the 1935 4c. issue printed, and millions still on hand at the time the first Commonwealth overprint was supplied, this stamp saw little use. In 1949, half of all the Large and Small 4c. Commonwealth stamps were destroyed.



Capiz to Manila
BISECT of 4c. Used
to Pay Internal First
Class Rate of 2c./20g

Only Recorded Bisect

WONG YOO
P.O. Box #1
MATI. DAVAO P.I.



Messrs. J. Wiss & Sons Co,
No. 33 Littleton Ave,
Newark, N. J., U.S.A.
REGISTERED MAIL, DAVAO, P.I.
MAR 9 1937

MANILA, P. I.

Mati, Davao to U.S.
Mar. 31, 1937. 6c. First
Class Rate; 20c. Registry
(No FDC are Recorded)

Earliest Reported
Postmark