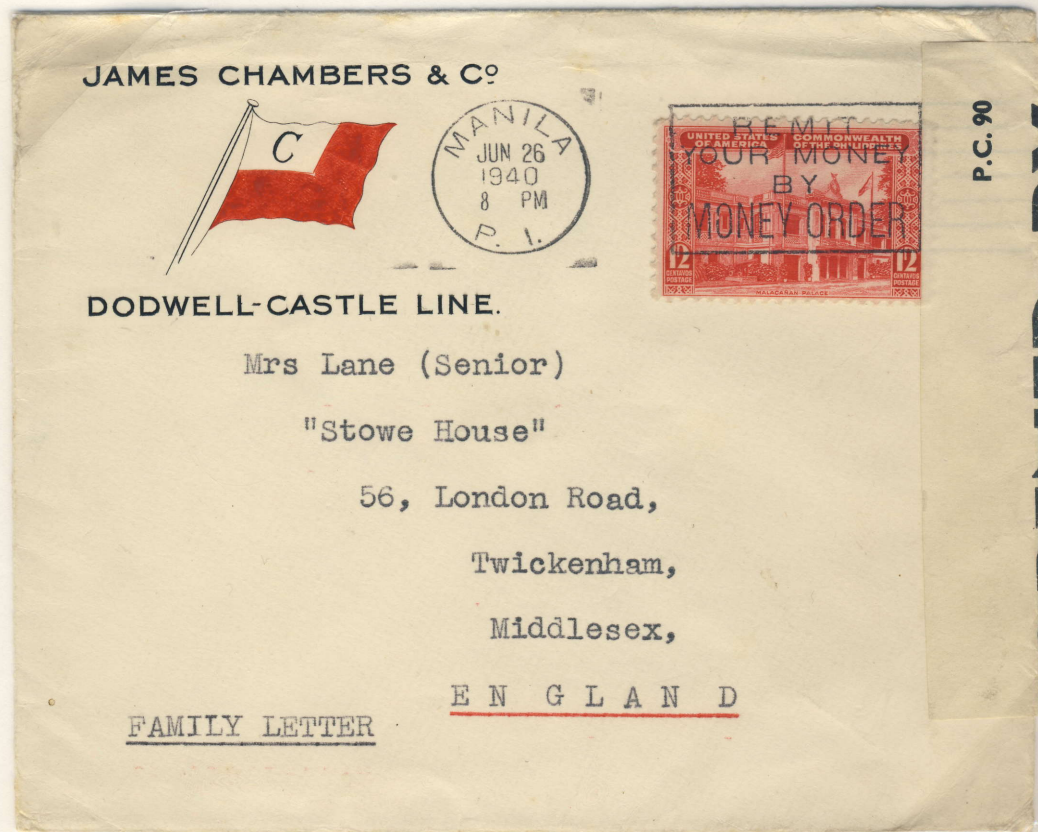


MALACANAN PALACE
12c. CARMINE POSTAL HISTORY

Manila to Middlesex, England,
June 26, 1940. British Censor.

12c. First Class Rate to Foreign
Destination, 1-20g



Manila to London, England, via Clipper, November 2, 1941.

Rec. London, Dec. 5, 1941. British Censor tape.

12c. First Class Rate to Foreign Destination, 1-20g., P1.60 Clipper Rate, 1-15g. = P1.72

The Philippine Director of Posts issued Circular 36, Sep. 8, 1939, creating a new Clipper airmail route to Europe via the United States. The so-called "Two-Ocean" rate (from Philippines crossing the Pacific to the U.S., and then crossing the Atlantic to Europe) was more expensive (P1.60 for every 15 grams or fraction), but it was supposed to be faster than the traditional air routes via Hong Kong or Singapore.