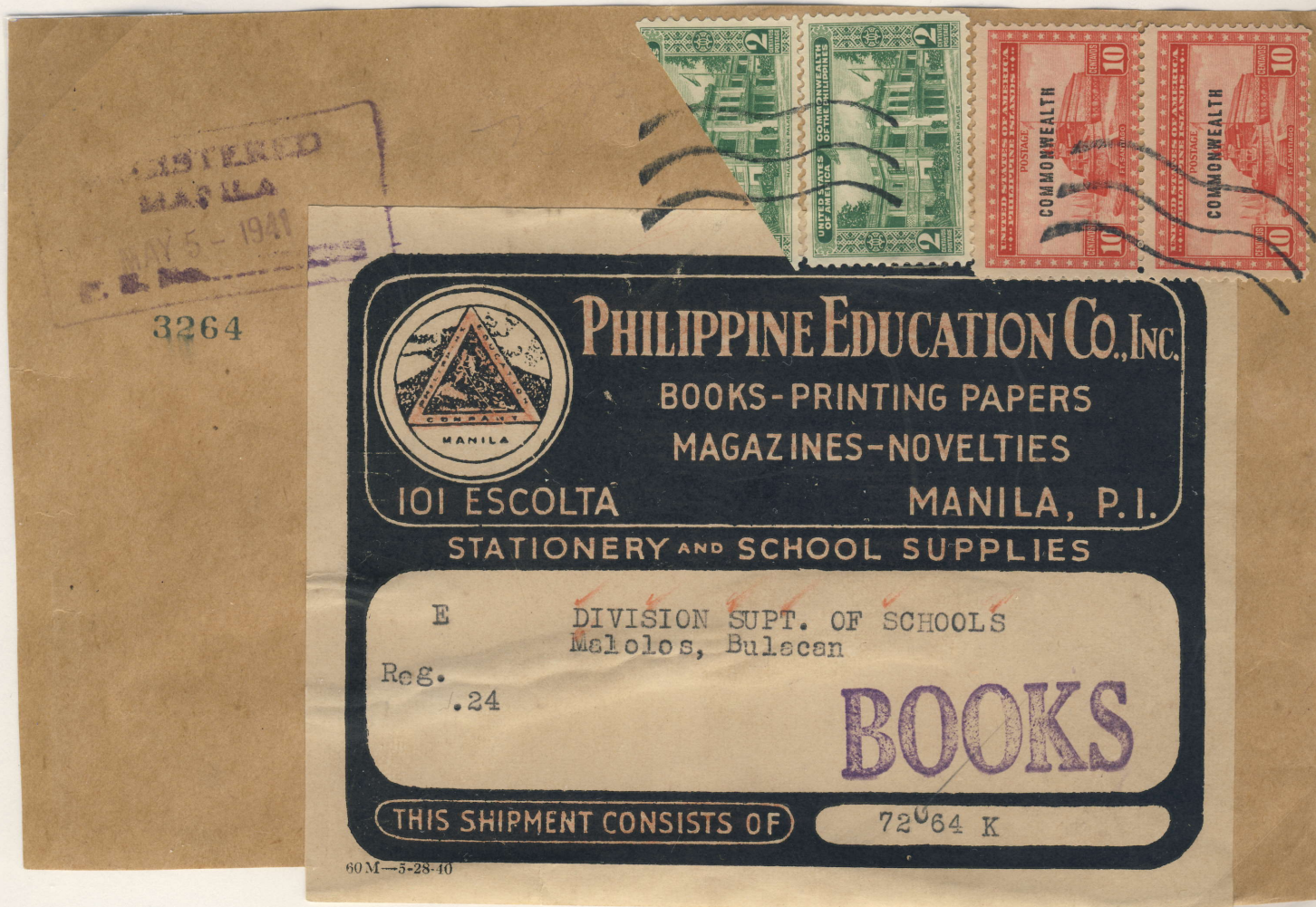


**1939 MALACANAN PALACE  
2c. GREEN POSTAL  
HISTORY**

Manila to La Serena, Chile,  
Apr. 30, 1941. Rec. May 29<sup>th</sup>

12c. First Class Rate to  
Foreign Destination, 1-20g

*Only Recorded Example  
to Destination*



Manila to Malolos, Bulacan, Internal use, May 5, 1941.

2c. Bisect as 1c., on piece of wrapper to pay second class rate = 3c. for each kilo or fraction, plus 20c. Registry Fee.

*Only Recorded Bisect - Only Recorded Example of 3c. Rate*

The use of bisected stamps was not expressly authorized by postal authorities. There was no objection as the existing postal rates included this 3c. rate for each kilogram or fraction, for mailing second class materials both internally and to the United States and possessions. As neither a 3c. stamp nor a 1c. stamp had been printed since 1904, the rate would require the use of a bisected stamp or mandate overpayment, which would have constituted an illegal penalty for utilizing an authorized rate.