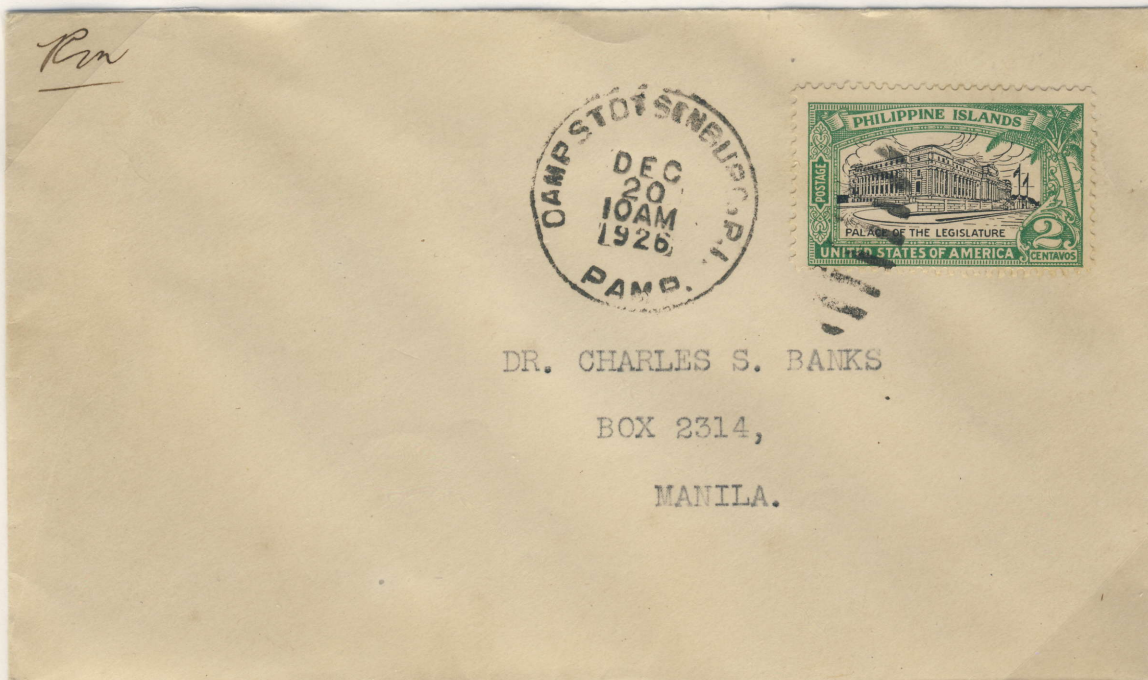


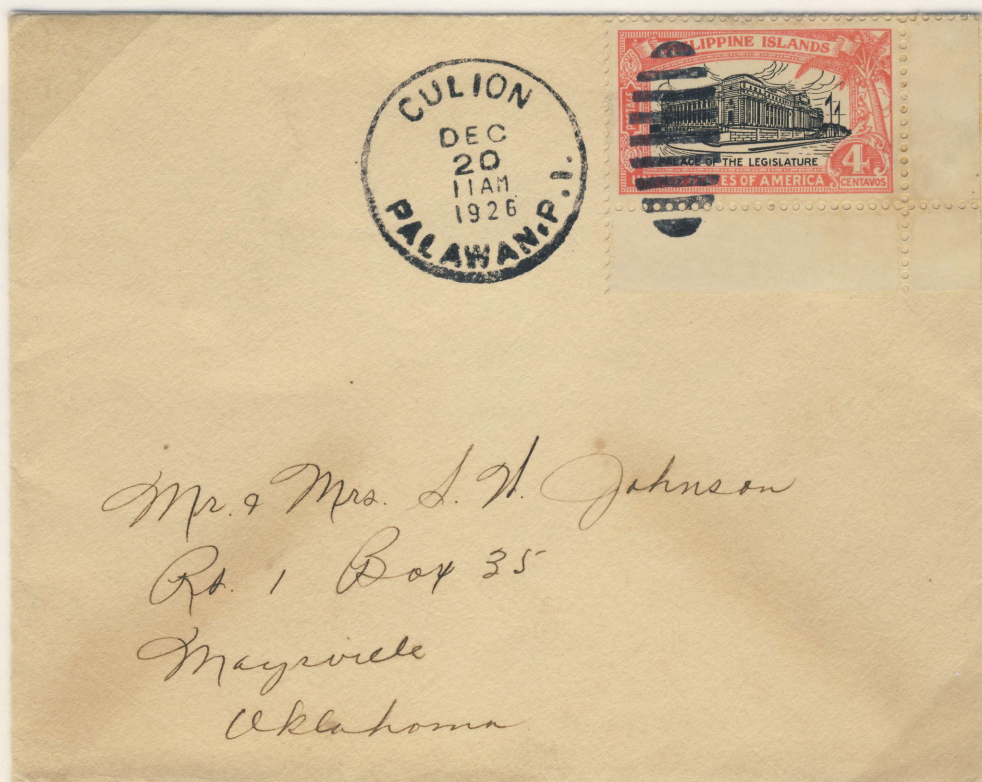
FIRST DAY COVERS (CITIES OTHER THAN MANILA)

CAMP STOTSENBURG



Manila circulating, 2c Internal First Class Rate, 1-20g.
Only Example Recorded

CULION



Culion, Palawan to United States, 4c First Class Rate, up to one ounce
Only Example Recorded

Culion Island, a small island in west-central Philippines was the site of Culion Reservation (known as the Culion Leper Colony), a therapeutic community founded in 1906 for the treatment of leprosy (Hansen's disease). It is highly unlikely Culion would have been considered a principal post office and received an early shipment of the Legislative Palace stamps as there was limited mail both to and from the Island during this period. Culion would not have received the Palace stamps until sometime after the date of issue to the public. It is more likely this cover was created after the fact as a favor, or for the necessary remuneration.